



THE GLOBAL CLIMATE CHANGE AND THE HIDDEN POLLUTION

Australian Scientist Humberto A. Cravero B.E.E. A.P.C.E.
Bachelor of Electronics Engineering
Biomedical & Scientific Electronics
Air Pollution Control Engineering
Prof. Global Climate Change Science
Inventor of Air purification technologies
Managing Director of Puriscience Pty Ltd

Index	Page
i Cover page	1
ii Index	2
iii Abstract.....	3
Introduction.....	4
The sun	5
Solar Radiation and Planetary Temperatures	6
Carbon Dioxide CO ₂	7
The OZONE layer	8
Composition of the Atmosphere.....	8
A report from NASA	9
VOLCANOS.....	11
THE HIDDEN POLLUTION.....	12
How does coalesced nanoparticles affect the climate?	17
Images of earth from NASA's International Space Station.....	21
Conclusion	22
Is there a solution?	22

ABSTRACT

The theory that Carbon Dioxide-CO₂, which amounts to 0.035% in the atmosphere is causing global warming, is not supported by physics or chemistry or measurements or observations and cannot explain the changes of the severe climatic conditions currently being experienced. In fact, it is not supported by science. Increase of the global average temperature is 0.7°C in the last 100 years, (NASA report)

For better understanding: The word “Coalescence” – means the process by which two or more separate masses of miscible substances seem to “pull” each other together should they make the “slightest contact”.

The atmosphere has lost its transparency due to accumulation of Coalesced Particulate Matter, (CPM).

Lack of transparency presents an obstacle for the sun’s radiation to travel through the atmosphere. This affects primarily the distribution of temperatures within the air causing an enhanced temperature contrast. Hot gets hotter and cold, colder.

Air temperatures are directly related to air pressure, therefore an increased pressure contrast is experienced.

Air pressures determine the velocity of winds, consequently an increased contrast in pressures result in stronger winds, hurricanes, tornadoes and typhoons.

Increased hot temperatures in some places results in long droughts, and increased cold temperatures results in heavier snowfalls and frost.

The altered air temperatures also cause greater ocean evaporation which translates to greater clouds accumulation, consequently torrential rainfall and floods occur.

Emissions of CPM into the air continue to increase; parallel the weather severity continues to worsen.



Introduction

FOR AS LONG AS SCIENTISTS AND GOVERNMENTS INSIST ON THE THEORY OF GLOBAL WARMING CAUSED BY CO₂, THE CLIMATIC CONDITIONS IN THE PLANET WILL CONTINUE TO WORSEN CAUSING INCONCEIVABLE LEVELS OF DESTRUCTION AND DEATH.

2002 – 2016 - Major catastrophes due to weather phenomena all over the world hit the news headlines daily; powerful tornadoes and hurricanes, ferocious winds, torrential rains, destructive floods, typhoons, long droughts, extremely cold weather, and at the same time thousands die due to heat waves as well as catastrophic destruction by severe weather. Observing past records, particularly from the last fifteen years, the trend worsens steadily year after year and has now reached records breaking.

In a similar vein, people's health is being adversely affected. The air we breathe is highly contaminated with noxious substances, and this is evident by the high number of patients crowding hospitals emergency rooms affected with respiratory ailments and other allergies. It seems our planet is increasingly becoming a dangerous place to live in; weather changes will bring further destruction, suffering and death. Ultimately, we are at a standstill because our beautiful planet Earth is the only place we have to live.

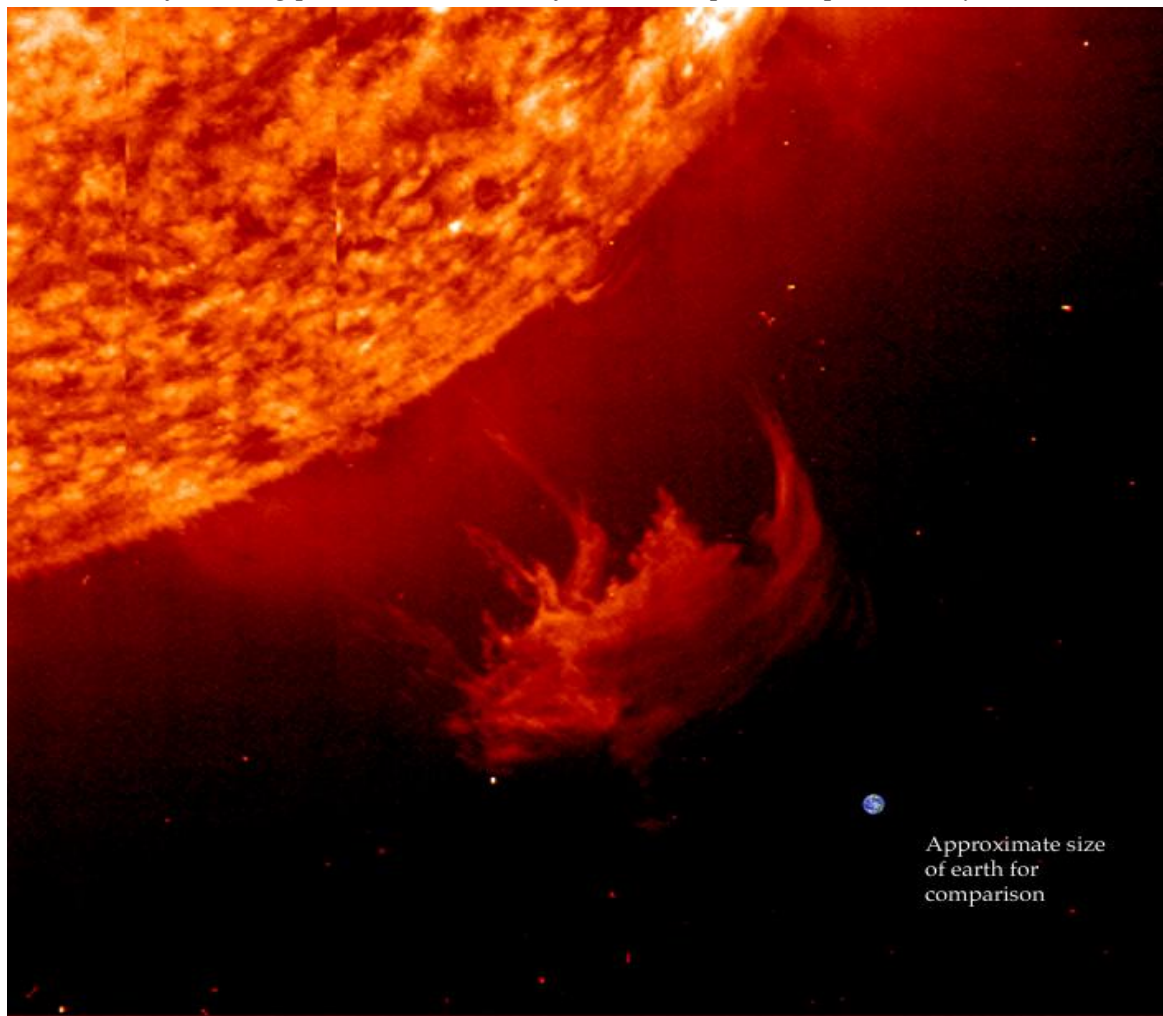
So this begs the question 'why is this happening?' The generic answer is 'global warming', but is it really? There is no doubt that something is upsetting the environment globally, so 'are institutions and governments focusing in the right direction?'

In the following pages some realities about the environment as we are in space are explained in order to understand some astrophysics; it is important to understand nature's physics and behaviour.

Here you will understand some erroneous concepts such as the ozone layer being destroyed by CO₂; and the planet warming up; believed to be responsible for the catastrophic climatic events.

It follows with the "Hidden Pollution", where the real cause of climate change is explained.

Observe the following picture Sun – Earth for size comparison, provided by NASA.



The sun: 330,000 times the mass of earth.

The Sun and the Earth

Is the sun increasing its radiation emission into space? The Sun has an approximate diameter of 1,392,000 kilometres, about 109 times that of planet Earth or more than three times the distance from the earth to the moon; it represents approximately 99.86% of the total mass of the solar system. To easily understand the magnitude of the sun let's compare as follows; if the mass of the sun and all the planets altogether measure 1000 millimetres, 998.6mm of the total mass belongs to the sun, and in the last 1.4mm consists of all the planets.

Planet Earth at an average distance of 149.5 million kilometres from the sun is therefore just a small point in space as it travels on its orbit.

The orbit, being elliptical, causes the planet to be at different distances from the sun by approximately 5 million kilometres between nearest and furthest, the nearest (perihelion) being 147 million kilometres, happens when the northern hemisphere is in summer, and the furthest (aphelion) being 152 million kilometres happens when the northern hemisphere is in winter. Observations show that temperatures are milder during winters and summers in the southern hemisphere and stronger in the northern hemisphere.

The differences of plus and minus 2.5 million kilometres from the average distance has little effect in the planet's overall temperature in the yearly average.

The earth, in its spherical surface, can intercept and absorb only so much of the sun's radiation. A great deal of it is affected by the albedo; reflected back into space by the atmosphere the oceans, clouds and the land. The maximum heat reaching the surface occurs at the summer side because the sun radiation, being more perpendicular to the surface has less atmospheric mass to pass through.

At night, the planet is exposed to the sidereal or cosmic cold, 0.0001 K° (Kelvin), which is virtually "absolute" zero degrees. Of the higher temperature gained during sun exposure a great percentage of it radiates into space during night time and the planet cools down. The minimum temperature will depend on how much heat was absorbed during day time, therefore there are mild to warm nights in summer while cold and freezing nights in winter.

Solar Radiation and Planetary Temperatures

The amount of heat radiation the planet receives is directly related to the area of the surface in the half sphere exposed to the sun at any one time. Due to the spherical shape and the rotation of the planet and the sun traveling from East to West, the poles are constantly at a minimum heat radiation, thus the poles do not receive enough heat and the sidereal cold has a greater effect in those areas, particularly during winter when it receives no heat at all.

The following graphic displays the average monthly temperatures and precipitation (Celsius, millimetres – year 2002) at the South Pole, Antarctica.

Month	Jan	Feb	Mar	Apr	May	Jun	Jul	Aug	Sep	Oct	Nov	Dec	Year
Avg high °C	-25	-37	-50	-52	-53	-55	-55	-55	-55	-47	-36	-26	-45
Avg low °C	-28	-42	-56	-60	-61	-61	-63	-62	-62	-53	-39	-28	-51
Precipitation millimetres	---	---	---	---	---	---	---	---	---	---	---	---	2.5

Radiation from the sun is constant. The planet's diameter is also constant, therefore the amount of radiation intercepted by the planet is also constant; this is how it has been for billions of years.

It has been suggested that changes in the sun surface such as sun flares, dark spots, etc., are responsible for the warming of planet Earth. This idea defies all laws of physics. The ultimate fact is that with modern technologies, we can now see the sun's behaviour in great detail. Accordingly then, we must understand that any behaviour that the Sun exhibits in our observations, has been consistent for billions of years, and therefore, any significant change will take millions of years before it can be noticed.

With regards to temperatures in different areas on earth, not globally but depending on meteorological localized conditions, there have been periods of heat waves that can get to extremes as seen in the table below.

[Region]	Place	Date	Degrees Centigrade
World (Africa)	El Azizia, Libya	Sept. 13, 1922	58
North America (US)	Death Valley, Calif.	July 10, 1913	57
Middle East	Tirat Tsvi, Israel	June 21, 1942	54
Australia	Cloncurry, Queensland	Jan. 16, 1889	53
Europe	Seville, Spain	Aug. 4, 1881	50
South America	Rivadavia, Argentina	Dec. 11, 1905	49
Canada	Midale & Yellow Grass, Saskatchewan Canada	July 5, 1937	45

CARBON DIOXIDE CO₂

In the current trend of global weather severity, much is blamed to the generation of carbon dioxide, CO₂. It is believed that CO₂ is responsible for a depletion of the ozone layer in the upper atmosphere, however recent measurements are finding no such depletion except at the poles, yet CO₂ is generated from all sources much the same or even more than before.

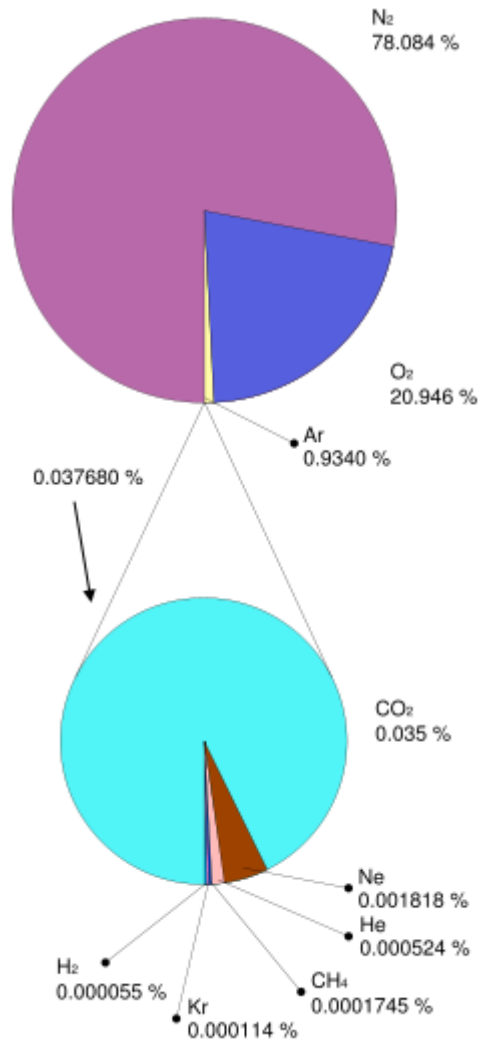
CO₂ is a natural gas of the atmosphere and it is not accumulative; if it was, by now from the past 150 years it would compose a much greater percentage in the atmosphere.

CO₂ is absorbed by plants, trees, most vegetation and also by the salty waters of the oceans that cover two thirds of the planet's surface. CO₂ is a gas of life on earth.

THE OZONE LAYER

Why is ozone depleted at the poles? The ozone [O₃] layer is produced by a photochemical reaction by the sun's ultraviolet [UV] radiation of wavelengths in the area of 250 nm (nanometres) against the molecules of oxygen [O] in the upper layers of the atmosphere. At the poles, due to the angle of the sun radiation, which has to pass through a much greater mass of the atmosphere, not enough radiation reaches the area to produce Ozone.

COMPOSITION OF THE ATMOSPHERE Let's observe the following graphic.



Composition of Earth's atmosphere: The lower pie represents the least common gases that compose 0.038% of the atmosphere. Values normalized for illustration.

Nitrogen (Purple) N = 78.084%

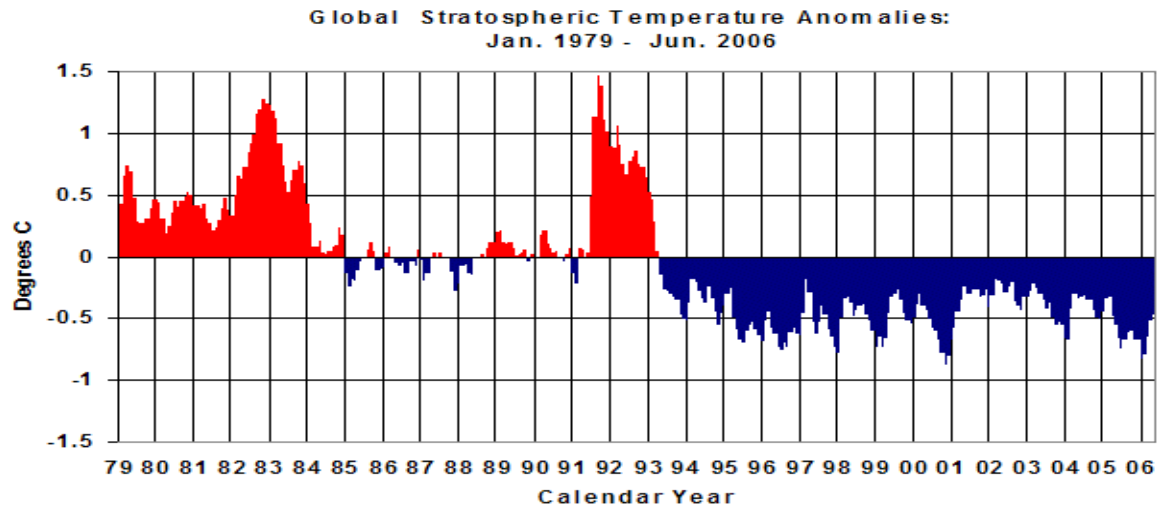
Oxygen (Blue) O = 20.946%

Carbon dioxide (Cyan) CO₂ = 0.035%

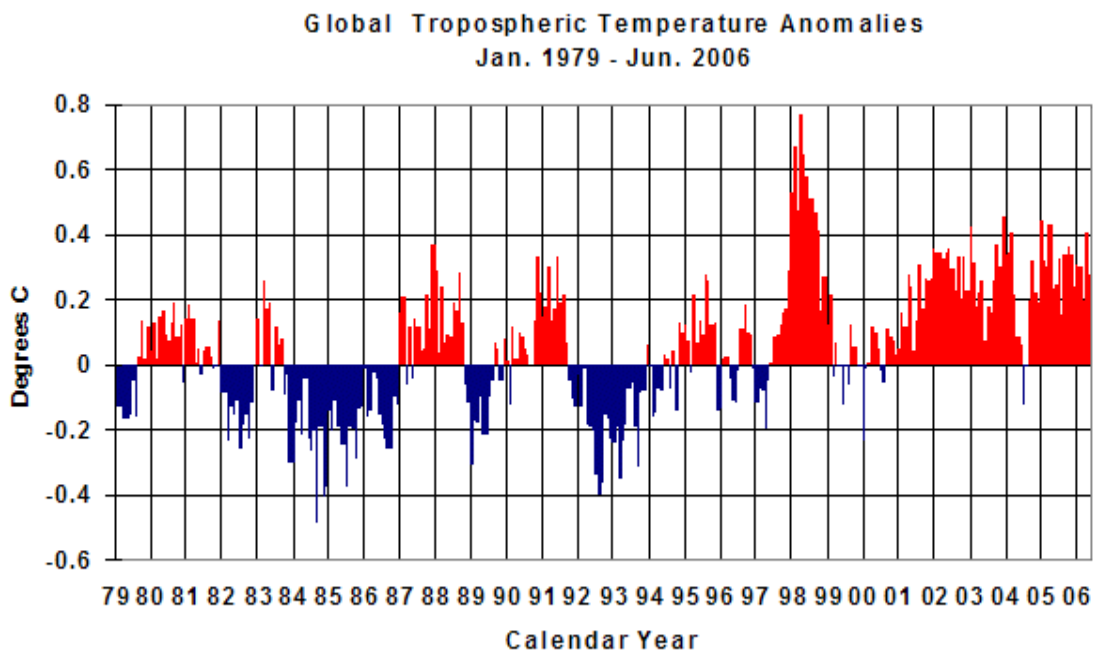
Does CO₂ destroy the ozone layer? This too defies the laws of physics; while it is true that in laboratory experiments CO₂ decomposes ozone, the extremely low percentage of CO₂ in the atmosphere could not have any effect particularly in the higher atmosphere where ozone is created by the UV sun radiation affecting the molecules of oxygen. The greatest concentration of ozone begins 15 km high and continues for another 15 km. It is physically impossible that the ozone layer could be affected by the low (0.035%) concentration of CO₂ in the lower atmosphere. No gaps in the ozone layer have been found although there have been (political) claims of the opposite.

A REPORT FROM NASA:

Globally-Averaged Atmospheric Temperatures



The figure above shows the monthly temperature deviations from a seasonally adjusted average for the lower stratosphere - Earth's atmosphere from 14 to 22 km (9 to 14 miles). Red is an increase in the temperature from the average, and blue is a decrease in temperature. The large increase in 1982 was caused by the volcanic eruption of El Chichón, in Mexico and the increase in 1991 was caused by the eruption of Mt. Pinatubo in the Philippines. November 2001 was the coldest month on record for stratospheric temperatures. The long-term downward trend in lower stratospheric temperatures is “believed” to be the result of ozone depletion (primarily), and to a lesser extent the increase in carbon dioxide concentrations due to the burning of fossil fuels.



This chart shows the monthly temperature changes for the lower troposphere - Earth's atmosphere from the surface to 8 km, or 5 miles up. The temperature in this region is more strongly influenced by oceanic activity, particularly the "El Niño" and "La Niña" phenomena, which originate as changes in oceanic and atmospheric circulations in the tropical Pacific Ocean. The overall trend in the tropospheric data is now +0.08 deg. C/decade (through 2004).

Surface thermometer measurements indicate that the temperature of the Earth is warming at an average rate close to +0.20 deg. C/decade since 1979, while the satellite data shows a warming trend of about half of this. These differences are the basis for discussions over whether our knowledge of how the atmosphere works might be in error, since the warming aloft in the troposphere should be at least as strong as that observed at the surface. [*End of NASA report*]

From this NASA report we can observe the evidence of temperature contrast between the lower and upper atmosphere.

Observation: A report indicates that emissions from motor vehicles contain 400 PPM CO₂. Vehicles, as we know, use fossil fuel. Much is blamed to the use of fossil fuels and the production of CO₂. Another report says there are 400 PPM CO₂ in the atmosphere. Therefore, it appears that the molecule of CO₂ is very stable and not affected by the internal combustion condition; so the CO₂ from vehicles exhaust is the same the engine inhaled with the air for its combustion, and so there is no production of CO₂ from the used fossil fuel at all.

A thought: Why CO₂ is increasing? Seven billion human beings when breathing inhale air to use the oxygen and exhale CO₂. This is the case with all lungs breathing creatures in nature where they exceed humans several times. The CO₂ is then absorbed by vegetation that absorbs the carbon and releases the oxygen. The cycle continues, however, hundreds of thousands of hectares are incinerated by bush fires around the world. While that may represent a small percentage to the total vegetation, it may result in a similar percentage of CO₂ not being used, consequently an equal percentage of increased CO₂ is experienced.

VOLCANOS

Most important for the sake of this study, are the effects of volcanic activity.



Large, explosive volcanic eruptions inject water vapour (H_2O), carbon dioxide (CO_2), sulphur dioxide (SO_2), hydrogen chloride (HCl), hydrogen fluoride (HF) and ash (pulverized rock and pumice) into the stratosphere to heights of 10-20 miles above the Earth's surface. The most significant impacts from these injections come from the conversion of sulphur dioxide to sulphuric acid (H_2SO_4), which condenses rapidly in the stratosphere to form fine sulphate aerosols. The aerosols increase the Earth's albedo—its reflection of radiation from the Sun back into space - and thus cool the Earth's lower atmosphere or troposphere; however, they also absorb heat radiated up from the Earth, thereby warming the stratosphere. Several eruptions during the past century have caused a decline in the average temperature at the Earth's surface of up to half a degree (Fahrenheit scale) for periods of one to three years. The sulphate aerosols also promote complex chemical reactions on their surfaces that alter chlorine and nitrogen chemical species in the stratosphere. This effect, together with increased stratospheric chlorine levels from chlorofluorocarbon pollution, generates chlorine monoxide (ClO), which destroys ozone (O_3). As the aerosols grow and coalesce, they settle down into the upper troposphere where they serve as nuclei for cirrus clouds and further modify the Earth's radiation balance. Most of the hydrogen chloride (HCl) and hydrogen fluoride (HF) are dissolved in water droplets in the eruption cloud and quickly fall to the ground as acid rain. The injected ash also falls rapidly from the stratosphere; most of it is removed within several days to a few weeks. Finally, explosive volcanic eruptions release carbon dioxide and thus provide a deep source of carbon for biogeochemical cycles.

The hidden pollution

There is a type of air pollution that has not yet been considered; this pollution is everywhere. It exists from the North Pole to the South Pole, from the east to the west; you and I are within it, at the beach or at the country side, in the city streets or inside the house. We are breathing it. Normally you cannot see it nor can you smell it. Some concern exists in various countries from a health point of view, but the real health hazard has not yet been assessed in its entirety. Beyond health concerns, there are also billions of dollars lost due catastrophic weather events which are coupled with the loss of thousands of lives. On top of this, there is also further damage to agriculture and livestock which in turn reduces food productivity at an alarming rate. It is in fact the very cause of Global Climate Change.

Let's look to an explosive volcanic eruption in more detail:

Gases at a tremendous pressure and temperatures nearing 5000°C escape through the crater sending matter 30 Km high into the atmosphere. As the gases pass through the lava, all sort of matter is released and shot into the atmosphere; particles are released from the elements composing the lava from small rocks and ash, pulverized rock and pumice. All this matter falls to the ground, larger rocks fall immediately surrounding the volcano, ashes expand for several kilometres carried by winds, and very small particles float for a while and can spread through thousands of kilometres. These are affected by rain and gravity and eventually all fall. There is however a pollution that is not affected by gravity or rain; it's a pollution that coalesce with the molecules of the air and becomes part of the atmosphere. They spread through the entire atmosphere. Only photochemical reaction from the sun's radiation eventually removes it, but this process takes a very long time (typically three and a half years following an explosive volcanic eruption.) These very small particles are called "nanoparticles" They are so small that are measured by nanometres, (one nanometre = 1 billionth of a metre).

Similar to volcanic eruptions, although not so violent and quick, nanoparticle matter is generated non-stop around the planet by human activity. It coalesces with the air and spreads all over the continents and dissipates throughout the entire atmosphere. The main sources of these are industrial and automotive.

Let's observe the following picture that was taken from a property at the hills of Cattai, a rural suburb of Sydney approximately 50 Klm northwest from the metropolitan area. The cloud is the pollution build up over Sydney on a Saturday without a breeze with a clear sky.



This picture is untouched and is exactly as it looked to the naked eye. This is also a common sight from the location. The photograph was taken approximately one hour before sunset.

Let's observe that the pollution cloud is thinner at the east, towards the ocean, (left) and gradually thickens towards the west, (right). We should remember this for later reference.

The brown haze is formed by the accumulation of particles and smoke emissions primarily from the exhaust gases from internal combustion engines and secondly by industrial emissions. Note that immediately above the brown haze there is a lighter area that becomes less apparent as it gains altitude. This is the hidden pollution formed by the accumulation of nanoparticles that have coalesced with the gases of the air.

The following picture has been computer processed to reveal the coalesced matter. The circular appearance is due to a rainbow effect caused by the angle of the setting sun's rays. It covers approximately 35 Kilometres from east to west over Sydney.



This pollution spreads through the atmosphere globally as it become part of the atmosphere.

The atmosphere, as a result, no longer has a clear transparency but rather a high degree of opacity. This is indeed the cause of the altered temperatures as previously shown in the NASA report.

A Report from the Australian Government Analytical Laboratories

Thanks to a device invented 20 years ago, various chemical elements never mentioned before as components of pollution from the exhaust of motor vehicles were trapped and retained from the exhaust of an internal combustion engine. The samples were sent for analysis to the Australian Government Analytical Laboratories. The following graphic is a copy of one of the reports comprising metal contents.

AUSTRALIAN GOVERNMENT ANALYTICAL LABORATORIES		
An ISO 9001 Quality Systems Certified Organisation		
REPORT OF ANALYSIS		1 / 1
CLIENT (3684) : MEDILOGICS P/L PO BOX 301 NORTH RYDE NSW 2113		DATE RECEIVED : 30/05/95 ORDER NUMBER :
LAB REPORT #	CLIENT REF #	DESCRIPTION
V95/013439	SAMPLE 1	WATER MEDILOGICS
V95/013440	SAMPLE 2	WATER MEDILOGICS
Client Ref No.	SAMPLE 1	SAMPLE 2
Lab Report No.	V95/013439	V95/013440
Aluminium	0.35	0.12
Barium	0.046	0.072
Calcium	1.3	6.6
Iron	3.8	8.3
Lead	0.12	0.057
Magnesium	0.27	1.1
Manganese	0.048	0.14
Mercury	0.0011	0.0006
Potassium	2.5	3.1
Silicon	2.0	<0.2
Sodium	5.9	4.7
Titanium	<0.2	<0.2
METHOD OF ANALYSIS :		
The samples, as received, were analysed by AGAL(Vic) method VL250 using Inductively Coupled Plasma Atomic Emission Spectroscopy and Inductively Coupled Plasma - Mass Spectrometry. Results obtained are tabulated above.		
NOTES :		
1. Results are expressed in milligram per Litre (mg/L).		
2. "<" is the symbol for "less than".		
Signed		
<i>Peter Coleman</i>		
(for Director)		
Date: 8/6/95		
A Division of the Australian Department of Administrative Services	Melbourne Laboratory 51 - 65 Clarke St South Melbourne VIC 3205	tel: (03) 958 777 fax: (03) 958 1788

It is important to observe that some of these substances are not only components of the fuel, but from the tear and wear of the engine. Amongst the substances, various carcinogens are found.

These elements compose some of the contents of the massive pollution cloud over Sydney as seen in the picture, mostly in the coalesced area.

The following image is pointing to the same area of the previous picture. This was taken on a windy day. Although the pollution did not accumulate due to the wind, it was still generated and carried away, dispersing throughout the atmosphere. This is the case in every city in the world.



As previously said, CO₂ is not accumulative, it is needed in nature by vegetation and the release of oxygen by plants, and its amount in the atmosphere, again, is minute, 0.035%.

The nanoparticles that have coalesced with the molecules of the air is however a different story. Although they are not accumulative either, it takes a long time for the natural processes such as photochemical reaction with the sun's radiation to eventually be removed.

The problem is that the generation of this pollution by human activity, unlike volcanic eruptions that flare for a few days or weeks and then stop, is continuously generated by over one billion motor vehicles around the world... around the clock. Motor vehicles census in 2010 = 1.015.000.000

Recent measurements of nanoparticle emissions from internal combustion engines show that small vehicles emission contain between 2000 to 5000 parts per million (PPM) Medium size vehicles from 5000 to 11000 PPM. Diesel Trucks (particularly the most modern designs equipped with the most advanced exhaust systems) emit over 20000 PPM; this means that the usually visible smoke in older trucks has been converted mostly into nanoparticles by modern exhaust systems.

The amount of coalesced pollution generated by manmade technologies is greater than nature's threshold to dispose of it; consequently a major degree of accumulation in the atmosphere is taking place. As nature's threshold to neutralize this pollution has long been exceeded, the effects are being experienced by the weather anomalies.

HOW DOES COALESCED NANOPARTICLES AFFECT THE CLIMATE?

This is simply basic physics: Sun light is normally shadowed by the clouds. Anything in the air that presents a resistance to light obstruct its brightness; it may be smoke from bush fires or ashes from volcanic eruptions; and so do accumulation of CPM (Coalesced Particulate Matter) in the atmosphere. However, while smoke from fires and ashes from volcanoes creates local shadowing, CPM shadows the sun light globally, throughout the entire atmosphere.

At this point it is necessary to do a comparison between CO₂ and CPM:

CO ₂	CPM
Is a natural gas in the atmosphere	Is an infused form of pollution formed by coalesced small particles (PM10 to PM0.1)
It does not accumulate as it is constantly absorbed by the biochemical process	It is accumulative and builds up in the atmosphere
It does not present an obstacle to light	It present an obstacle to light and absorb energy from the sun's radiation
It is said that its amount in the atmosphere has increased to 400 PPM (Parts Per Million)	No measurements exist. From observations it is noted that the horizon has acquired an orange tint when viewed from ground level, but from an airplane at 10 Km high it looks like a dark brown wall.
From the previous measurement of 380 PPM to 400 PPM it is an increase of 20 PPM. No further increase has been noted in the last three years to 2016. How 0.002% increased CO ₂ can cause the current trend of Climate Change?	It is accumulating steadily day after day. It has long ago exceeded the threshold of nature to have it reduced by photochemical reaction from the sun radiation.
It cannot cause Global Warming	It does not cause Global Warming but a contrast in Global temperatures.
It is a gas of life on earth	It is highly detrimental to all forms of life, it contains carcinogenic & allergenic substances

PARTS PER MILLION – PPM

Many people hear the term 400 parts per million; wow, FOUR HUNDRED PARTS PER MILLION, how terrible. It sounds fairly impressive, but very few actually understand what it means. The following will help understand exactly what it is. We will use millilitres mL and water: One litre of water has 1,000 mL; $1,000 \times 1,000 = 1,000,000$ mL, therefore there are 1,000,000 mL in 1,000 litres of water. A can of apricot nectar from the supermarket contain 400 mL. Empty the can into the 1,000 litres of water and you have 400 parts per million of apricot nectar in the water. (You may remove 400 mL of water prior to adding the nectar for accuracy)

To maintain the ratio divide all numbers by 100, so you end up with 10 L of water, and 4 mL of nectar, so 4 mL into 10 L is also 400 PPM. It used to be 380 PPM CO₂ in the atmosphere, so there is an increase of 20 PPM. It would then be 3.8 mL + 0.2 mL into 10 L water. 0.2 mL is just about two drops of nectar.

CPM (Coalesced particulate matter)

Sun light is directly affected by CPM in the atmosphere. CPM absorbs heat; therefore in the summer side as the sun radiation has less atmospheric mass to pass, the radiation causes a significant increase of temperature of the air. As towards the edges of the sphere the sun radiation must pass through a far greater mass of atmosphere, the previously absorbed

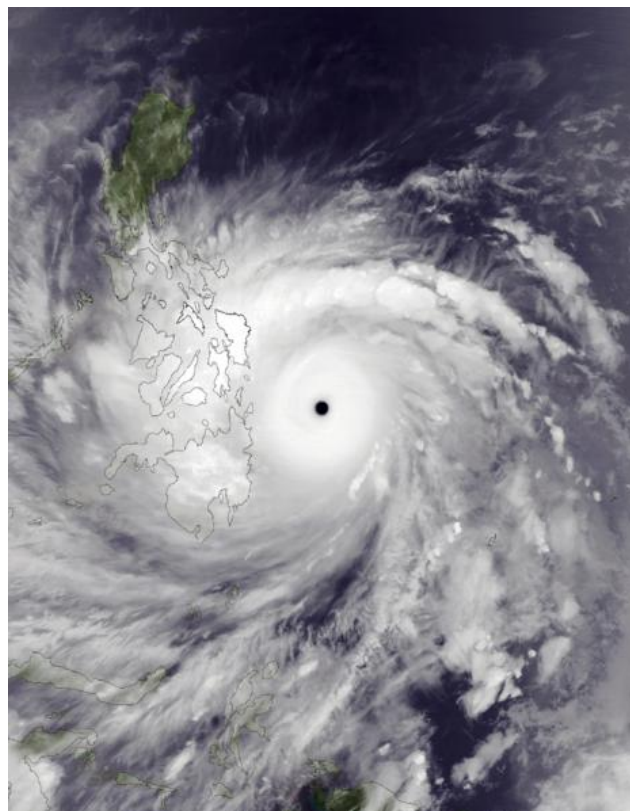
radiation does not reach the far end, consequently in the winter side, temperatures are lower than normal.

“There is no global warming but a redistribution of temperatures”. This is quite significant as temperatures at the poles have measured much colder than in the past and temperatures in the tropics and summer sides exciding $+50^{\circ}\text{C}$ in some areas with long periods over $+40^{\circ}\text{C}$. At the same time, temperatures at the winter side have dropped to around -50°C . The difference of temperatures between summer and winter hemispheres at the end of 2013 and the beginning of 2014 have been approximately 100°C . Consequently, this is a major “increased contrast” in the global temperatures.

Coalesced pollution becomes visible when looking at the horizon, especially at sunset times; just look at the east, and if the sky is clouds free you will see an orange to pink layer in the lower atmosphere that weakens as it gains altitude; as the sun sets in, the shadow from the planet begin to stop the light at ground level so the layer continues to be visible in the altitude and eventually right over your head. The distance of the horizon viewed from ground level is between 3 to 6 kilometres depending on the altitude of the terrain, but when the pollution layer is seen from an airplane at ten kilometres of altitude, it looks like a dark brown layer all around the circumference of the horizon.

From this contrast of temperatures originate all the changes being experienced with the climate, globally.

Air temperature determine atmospheric pressure and higher and lower air temperatures results in lower and higher air pressures, therefore atmospheric pressures also experience an increased contrast. This increased contrast in pressures results in higher wind speeds. The greater the difference in pressures the stronger the winds become. A record typhoon such as Typhoon Haiyan, also known as Typhoon Yolanda in the Philippines, was a powerful tropical cyclone that devastated portions of Southeast Asia, particularly the Philippines on November 8, 2013. It is the deadliest Philippine typhoon on record, killing at least 6,201 people in that country alone. Haiyan is also the strongest storm recorded at landfall, and unofficially the strongest typhoon ever recorded in terms of wind speed. As of January 2014, bodies were still being found.



Satellite image of Typhoon Haiyan

Not only wind speed and ferocious hurricanes and tornados are the result of atmospheric temperature contrast; water evaporation from the oceans increases the productivity of clouds and depending on the zone and seasonal climate conditions major flooding occur, while at the same time in other places of the planet extensive droughts destroys agricultural productivity.

Winds, droughts and floods have had an impact all over the world.

The physical effects of CPM in the atmosphere, follows a chain of events.

- a- In Nature: Explosive volcanic eruptions infuse large amounts of CPM into the atmosphere.
- b- Human: Motor vehicle exhausts generate high levels of nanoparticles into the air. This also occurs from other sources of combustion such as burning of fossil fuels.
- c- Nanoparticles coalesce with the gases of the air and become part of the atmosphere.
- d- Coalesced nanoparticle pollution is normally removed by photochemical reaction from the sun's radiation, but it takes a very long time; 3 to 4 years from major explosive volcanic eruptions.
- e- Man-made production of coalescing pollution has reached and passed nature's threshold to remove it, consequently accumulation has occurred.
- f- Accumulation of coalesced pollution causes the atmosphere to lose its transparency or clarity.
- g- Absorption of sun radiation is greater in the lower atmosphere as the density of coalesced matter follows the density of the atmosphere. Specifically where radiation is more perpendicular.
- h- An opaque atmosphere presents resistance to the sun's radiation and the greater the mass of air it has to pass through, the greater the amount of temperature is absorbed. As the mass of air increases as it angles towards the north and south poles, most of the previously absorbed radiation does not reach the poles, consequently much colder temperatures have been detected in both poles at the same time.
- i- Where the sun is more perpendicular to the surface of the earth, in the summer side, the air temperature becomes significantly hotter than usual.
- j- The alteration of temperatures causes the air to experience an enhanced contrast of temperatures within the atmosphere. Increasingly warmer on the summer side; increasingly colder on the winter side.
- k- Higher temperatures cause the air to reduce its density and lower temperatures to increase its density; consequently changes in atmospheric pressures are also enhanced. High pressures are higher than usual and lows are lower. This generates stronger winds sometimes with overwhelming destructive power.
- l- The local weather patterns experience the effects of the temperature contrast; severe drought conditions develop. Paddocks become deserts. Strong winds remove dust from the soil. Vegetation and livestock die.

- m- Eventually the rains arrive; enhanced by the temperature contrast rain becomes torrential and in a few hours it exceeds the whole season's average rainfall; this causes major flooding. Those deserted paddocks are converted into lakes. Flood water causes destruction in its path.
- n- There is however another phenomena, the polar snowfall and rain conditions have drifted in a direction towards the Equator; as a consequence heavier snowfalls occur in the pre-polar circles and extends for some kilometres towards the Tropics, that is from both Arctic and Antarctic circles. This creates major disturbances in weather conditions in those areas and beyond.
- o- In days of extreme accumulation of particles, like the one in the picture in this study, hospital's emergency departments are crowded with asthma sufferers and other respiratory ailments. Cardiac arrest cases also increase, but one astonishing discovery is a report on cancer incidence amongst the population according to the place where they live in Sydney's metropolitan area. Reports indicated there is a low incidence of cancer amongst the population in the eastern suburbs of Sydney, and it is very high in the western suburbs. This is consistent with the concentration of pollution in the air as seen in the picture of page 13.

The trend is therefore "Opacity of the Atmosphere" caused by CPM

Let's look back at the report from NASA on temperature changes, (graphic on page 9) particularly to the times of volcanic eruptions in 1982 to 1984, and 1991 to 1993. In both cases the contamination of the atmosphere started, it reached a peak and then gradually came back to normal in a period of three years +. Nature managed.

Similarly it will happen if we stop the continuing emission of particles into the air. It will take only some five to seven years for the climate to return to its normal behaviour.

How to stop it? Removing every internal combustion devise from the face of the earth would be impossible; the world economy would collapse. Humanity would revert to the dark ages.

Replace all combustion energy with new technologies? That will have to be done but at the moment it would take too long; there is over a billion registered motor vehicles in the world. It would take over 30 years to manufacture new technologies providing mass production has already started, and then the world population won't be able to afford the cost. The fact is, mass production of internal combustion engine vehicles continues uninterrupted. Parallel, opacity of the atmosphere increases with the consequential disastrous effects.

This is Humanity's greatest emergency. Governments of the world must pay prime attention to the effects of climate change. Programs to increase food productivity will be futile if everything may be destroyed by severe weather.



These pictures were taken from the International Space Station. The ultimate horizon: The dark layer in the horizon is the atmosphere; it does not appear as a blue transparent crystalline layer as it used to. It is now saturated with CPM. In the higher atmosphere a thin light blue line is seen; it is the clean portion of the atmosphere been processed by nature's photochemical activity from the sun radiation. Nature can no longer remove this pollution beyond that line. The continuous infusion of coalesced matter must stop. "URGENTLY"



Conclusion

1. The planet cannot increase or decrease its average temperature.
2. Carbon dioxide CO₂ does not have an effect in Global Warming.
3. There is no such thing as Global Warming but **“Temperature Contrast that causes a Redistribution of Atmospheric Temperatures”**
4. Manmade emissions of nanoparticles have caused the atmosphere to become opaque.
5. The cause of climate and weather pattern changes is due to...

“OPACITY OF THE ATMOSPHERE CAUSED BY ACCUMULATION OF COALESCED PARTICULATE MATTER (CPM)”

7. Weather anomalies will continue to worsen. Severity of future climate events will increase parallel with the ever increasing emissions of CPM by internal combustion engines, coal mining and mines in general and other sources. Every year will be worse than the previous. Greater destruction and a high number of casualties are to be expected.

Is there a Solution?

A solution exists: It will be disclosed once the realities explained in these pages are recognized, understood and accepted.

Puriscience Pty Ltd,

Phone Mb +61 (0)404042272 Email inventus@puriscience.com

First release July 2002

Reviewed December 2004

Reviewed and updated April 2014

Last update October 2016

Previous versions sent to the Australian Governments of:

Prime Minister John Howard

Prime Minister Kevin Rudd

Prime Minister Tony Abbott

The current Government of Prime Minister Malcolm Turnbull

